

BAYOU SORREL REPLACEMENT LOCK, LOUISIANA

INLAND WATERWAYS USERS BOARD MEETING #97

Brad Inman
Branch Chief, Projects and Restoration Branch
U.S. Army Corps of Engineers
PPMD/MVN
16 August 2022



* Drawing is not to scale

World-Class Delivery... Real-World Impact!



US Army Corps of Engineers®



PROJECT OVERVIEW OF SCOPE

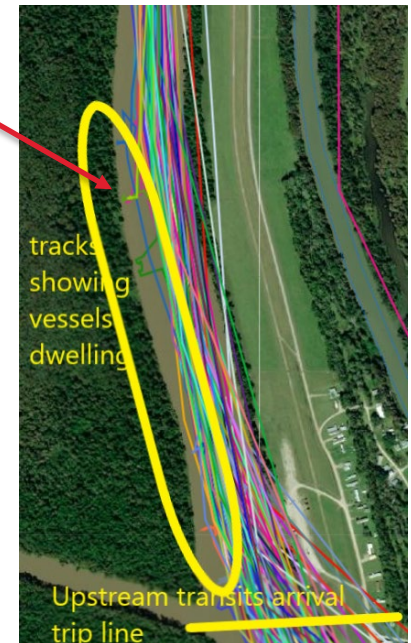


- Project was authorized for construction in WRDA 2007 at a cost of \$9.6M.
 - 75' x 1200' replacement lock
- Increased cost in the Preconstruction Engineering and Design phase
 - Led to a Post Authorization Change Report, which found the lock was no longer economically justified
- Enhanced analyses of Lock Performance Monitoring System (LPMS) data needed to accurately reflect observed delay times.
 - Results may influence the Benefit to Cost Ratio
- New start study is required (3x3x3 SMART Planning study)
 - We continue to express capability in President's budget requests and other funding opportunities

Bayou Sorrel Lock



AIS used to verify LPMS





OVERVIEW OF SCHEDULE AND FUNDING



- Most recent accomplishment:
 - Preliminary assessment suggest enhanced analyses of Lock Performance Monitoring System (LPMS) data are needed to accurately reflect observed delay times
 - Specifically, where assist vessels are used to aid lockages
- Additional analysis may move the needle
 - Could result in an economically justified project
- A new start study will address project justification
- Upon receipt of funding:
 - We will begin a new start study under 3x3x3 construct (3 years, \$3M)



PROJECT ISSUES AND CHALLENGES

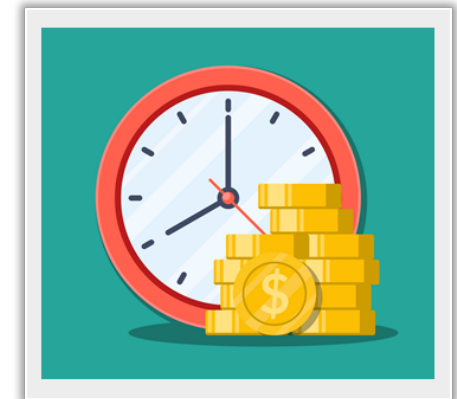
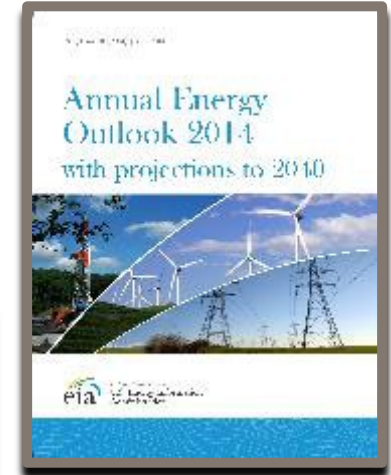


- Historical LPMS data
 - DOE Projections
 - Project cost growth
 - Dual purpose replacement (NAV/FRM)
 - 3x3x3 Construct
 - Various plans to consider
 - Benefit to Cost Ratio
- ➔ Fed Recommended Plan



Multipurpose

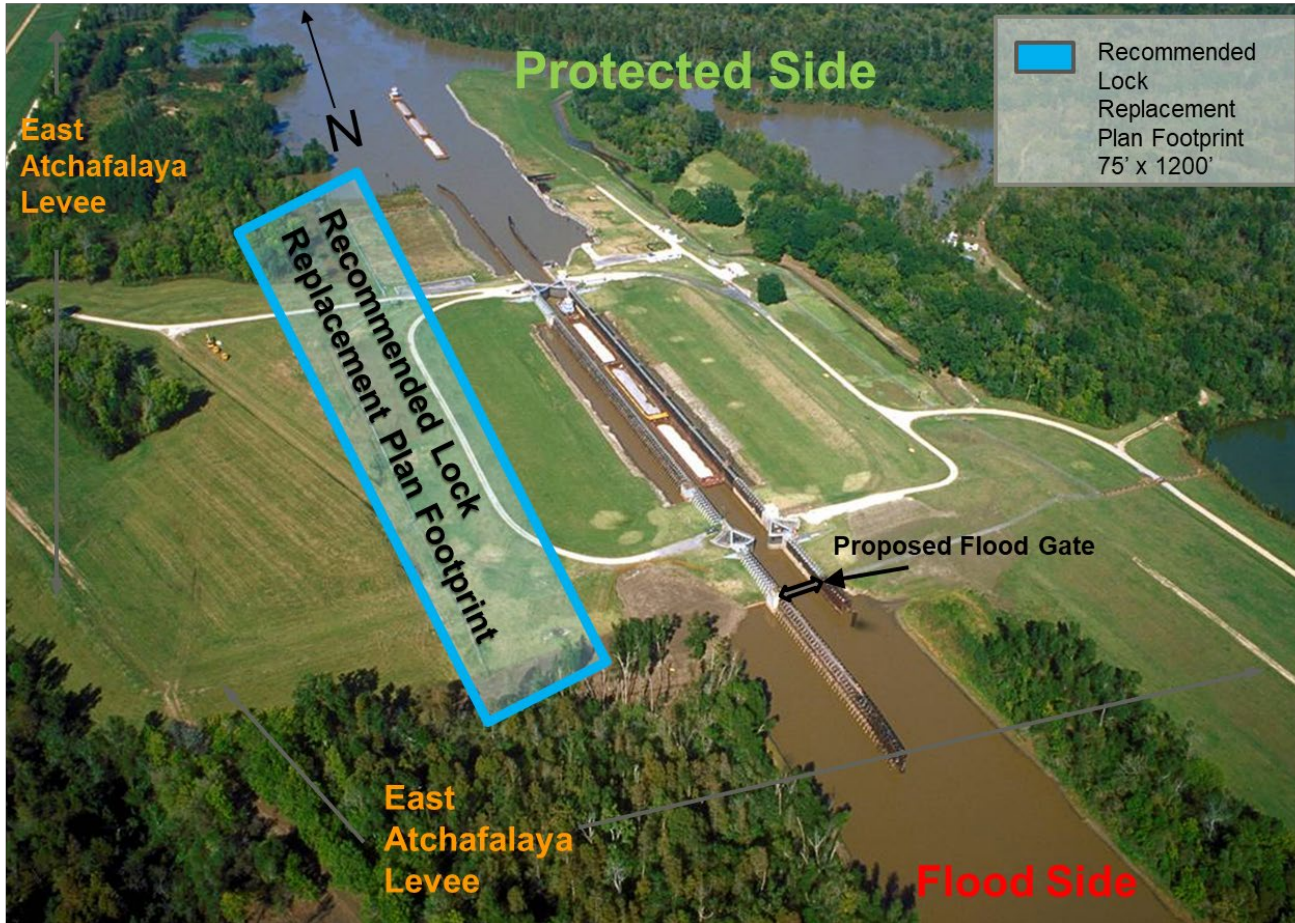
FRM and NAV





THANK YOU

Brad Inman, Brad.L.Inman@usace.army.mil



* Drawing is not to scale